



Compression for
those who value
Reliability



JOBST® Elvarex® Range

Flat-Knit Compression Garments for Lymphoedema
Therapy of the Upper Limb

JOBST® Elvarex®

Firm hold for
effective lymphoedema
management



Strong
Hold

Special knitting
structure allows air
to pass, to enhance
wearing comfort



Breathable

Optional functional
zone for greater
wearing comfort
and flexibility



Elbow
Functional
Zone

Subtle pressure of
the knitted fabric on
the skin provides a
micro-massage effect,
especially during
movement



Micro-
Massage

The established compression garment for **effective** lymphoedema management where **firm support** is needed

Take advantage of JOBST® Elvarex®, the RAL flat-knit compression garment.

To provide comfort and control, JOBST® Elvarex® products are custom-made and individually tailored to your patients measurements and unique shape, which ensures strong yet flexible support.



New innovation with **long-standing reliability**

Get more from your JOBST® Elvarex® with the added benefit of the new functional zones that can be knitted into the garments to give greater **mobility** and **support** around joints.

The patented functional zone is a uniquely knitted construction that helps to reduce the risk of cutting in and wrinkling. This provides the necessary **comfort** as well as retaining **compression** for improved **compliance** and **quality of life**.

Drug Tariff code: U-A008

Available in JOBST® Elvarex® custom-fit arm sleeve (C-G measuring points), in compression classes CCL2 - CCL2 Forte

Compression with expression - JOBST® Elvarex®, **now available in a wider variety of colours** to complement every personality

Enjoy trusted JOBST® Elvarex® quality in two additional colours, to help perfect coordination. With the new **ruby red** and **dark blue**, your patients now have the choice of a wider range of elegant tones.





JOBST® Elvarex®

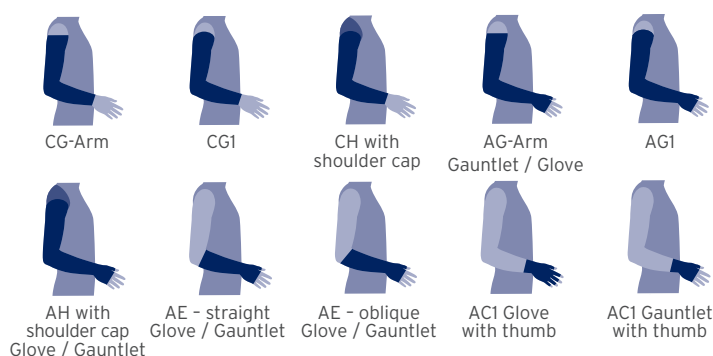
Greater choice to meet individual needs

Colours



Styles

The styles shown represent the JOBST® Elvarex® upper limb assortment. To see all styles, please refer to the JOBST® product catalogue.



RAL Compression

CCL1 - 15-21mmHg

CCL2 - 23-32mmHg

CCL2 Forte - 23-32mmHg

Top Bands

Stage 0	Stage 1	Stage 2	Stage 3
Latent: A subclinical state where swelling is not evident despite impaired lymph transport. This stage may exist for months or years before oedema becomes evident.	Mild: This represents early onset of the condition where there is a accumulation of tissue fluid that subsides with limb elevation. This oedema may be pitting at this stage.	Moderate: Limb elevation alone rarely reduces swelling and pitting is manifest. There may or may not be pitting as tissue fibrosis is more evident.	Severe: The tissue is hard (fibrotic) and pitting is absent. Skin changes such as thickening, hyperpigmentation, increased skin folds, fat deposits and warty overgrowths develop.

Staging according to International Society of Lymphology (ISL). Each band is available and suitable for all stages. The table serves only as a recommendation.

JOBST® Elvarex® Plus

JOBST® Elvarex® Plus has succeeded in adapting the inner strength of the JOBST® Elvarex® material to the skin's sensory perception, and the complex movements of the hands. With the unique 3D knitting technology, the custom-fit, flat-knit seamless compression garment reproduces body shapes accurately and fits like a second skin.



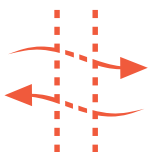
3D Knitting

Provide a perfect anatomical fit that is like a second skin. Helping to improve compliance and patient quality of life



Easy Donning

With uncompromised freedom of movement



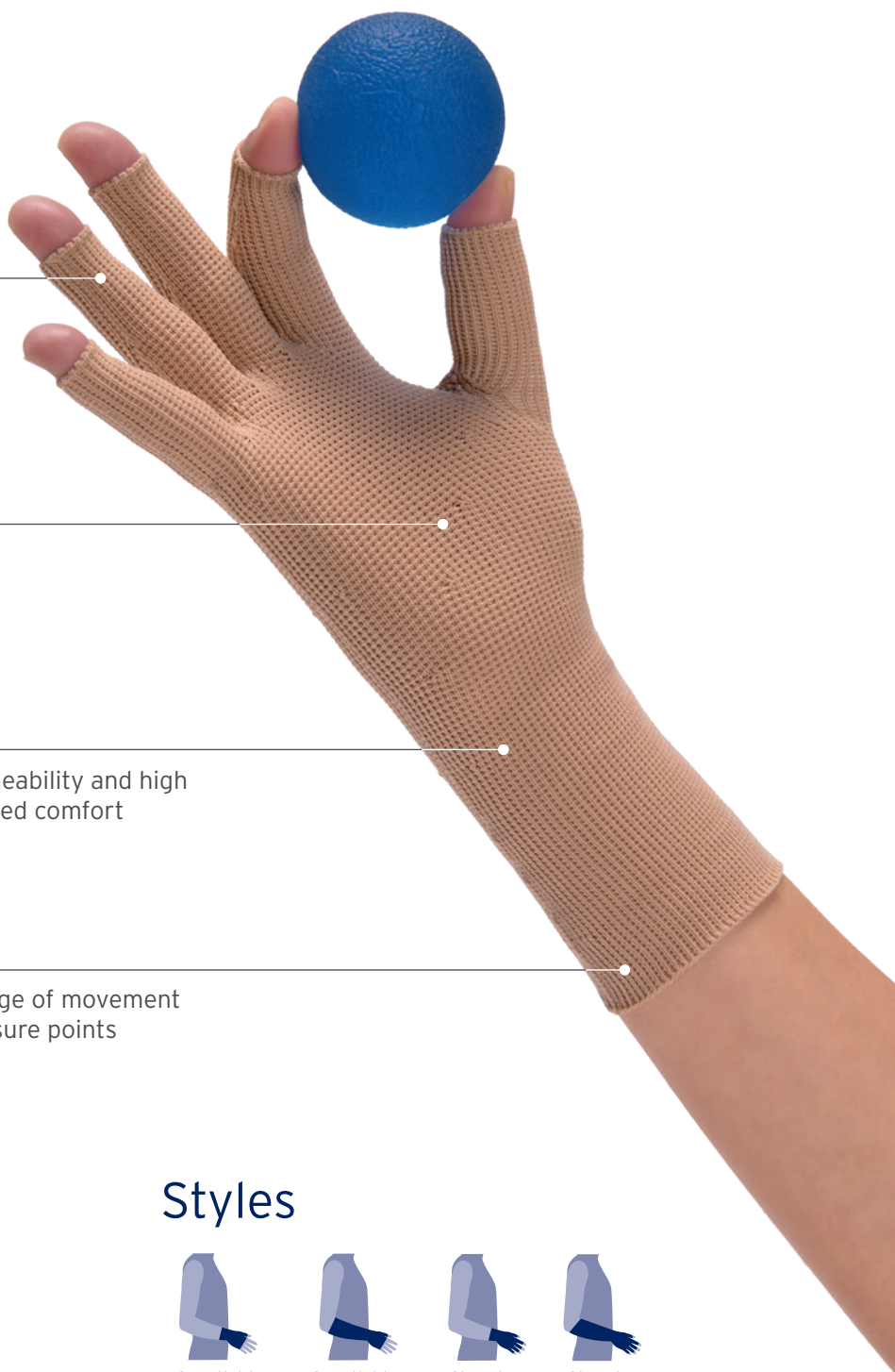
Breathable

Providing good air permeability and high breathability for enhanced comfort



Seamless

Providing maximum range of movement without chafing or pressure points



Colours



Ruby red



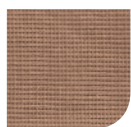
Cranberry



Macchiato



Dark blue



Beige



Black

Styles



Gauntlet to wrist



Gauntlet to elbow



Glove to wrist



Glove to elbow

RAL Compression

CCL1 - 15-21mmHg

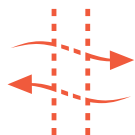
CCL2 - 23-32mmHg

JOBST® Elvarex® Soft



Strong
Hold

Firm hold for
effective
lymphoedema
management



Breathable

Special knitting
structure allows air
to pass, to enhance
wearing comfort



Soft Touch

Soft textured material
for enhance patient
comfort, ideal for
patients with
fragile skin



Micro-
Massage

Subtle pressure of
the knitted fabric on
the skin provides a
micro-massage effect,
especially during
movement

Providing skin-protecting softness with **effective compression**

The unique, knitted fabric contains a soft textured yarn, creating an extremely smooth fabric surface, and provides a particularly soft seam. This combination of skin-protecting **softness** and excellent **breathability** makes the garments particularly well suited for patients with dry, sensitive or fragile skin.

Colours

NEW



Ruby red



Cranberry



Macchiato

NEW



Dark blue



Beige



Black

NEW



Grey

NEW



Dark brown

Styles



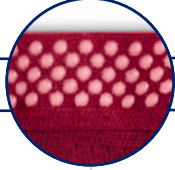


The styles shown represent the JOBST® Elvarex® Soft upper limb assortment. To see all styles, please refer to the JOBST® product catalogue.

RAL Compression

- CCL 1 - 15-21mmHg
- CCL 2 - 23-32mmHg

Top Bands

Stage 0	Stage 1	Stage 2	Stage 3
Latent: A subclinical state where swelling is not evident despite impaired lymph transport. This stage may exist for months or years before oedema becomes evident.	Mild: This represents early onset of the condition where there is a accumulation of tissue fluid that subsides with limb elevation. This oedema may be pitting at this stage.	Moderate: Limb elevation alone rarely reduces swelling and pitting is manifest. There may or may not be pitting as tissue fibrosis is more evident.	Severe: The tissue is hard (fibrotic) and pitting is absent. Skin changes such as thickening, hyperpigmentation, increased skin folds, fat deposits and warty overgrowths develop.
	Welt with  SoftFit® technology		
Knitted welt 		Silicone band 	

Staging according to International Society of Lymphology (ISL). Each band is available and suitable for all stages. The table serves only as a recommendation.

JOBST® Elvarex® Soft Seamless

Seamless technology provides a better anatomical fit due to the special knitting technique. The glove is constructed without a seam and with very flat, elastic edges. This makes the glove exceptionally comfortable to wear, without loss of manual dexterity, helping to improve patient concordance.



Easy Donning

Providing uncompromising freedom of movement



Strong Hold

Double-covered material yarns ensure uninterrupted and controlled compression



Soft Touch

Soft textured material to enhance patient comfort, ideal of patients with fragile skin



Seamless

Providing maximum range of movement without chafing or pressure points helping to improve patient compliance and quality of life



Colours



Ruby red



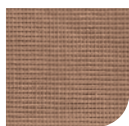
Cranberry



Macchiato



Dark blue



Beige



Black



Grey



Dark brown

Styles



AC1 Gauntlet
(with thumb)



AC1 Glove



A-E Glove
/ Gauntlet
(to elbow)

RAL Compression

CCL1 - 15-21mmHg

CCL2 - 23-32mmHg