

Application Guide

Leukomed® Sorbact®

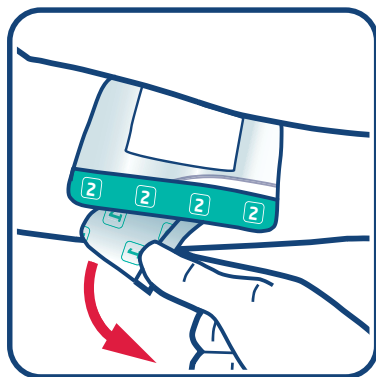
Bacteria and fungi binding dressing -
absorbent film dressing



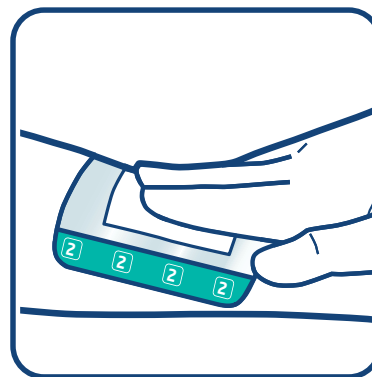
Application video:



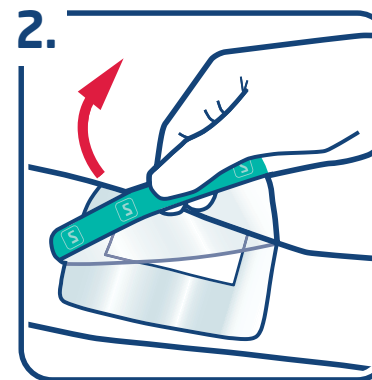
STEP 1 Remove the sterile dressing from the peel pouch using aseptic technique. Hold the wound dressing by the coloured strip (handling tape) and remove the first layer of release liner (labelled as no. 1) to expose the adhesive surface.



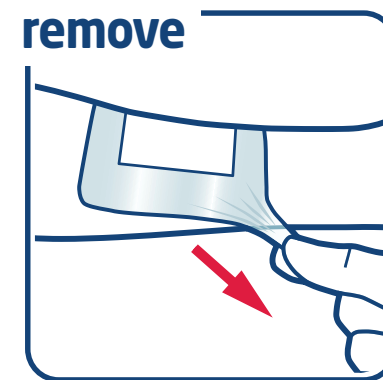
STEP 2 Hold the wound dressing by the coloured strip (handling tape) with the adhesive facing towards the wound, and carefully but firmly position the dressing over the desired area. Ensure that the Sorbact® wound contact layer comes into direct contact with the entire wound surface. Now remove the second layer of the release liner (also labelled as No. 1).



STEP 3 Smooth the film securely to the skin, paying attention to edges. Full skin contact ensures that the dressing is waterproof and a bacteria barrier.



STEP 4 Carefully peel away the upper coloured strip (labelled No 2.) by slowly pulling the strip backwards, parallel to the skin. DO NOT pull the strip upwards.



STEP 5 To remove the dressing, pull and stretch the film of the dressing parallel to the skin. Repeat along the edge of the dressing until removal is complete.

For more detailed information, please refer to the Leukomed® Sorbact® Instructions For Use (IFU)

Leukomed® Sorbact® may remain in situ for up to 7 days if clinical condition allows.